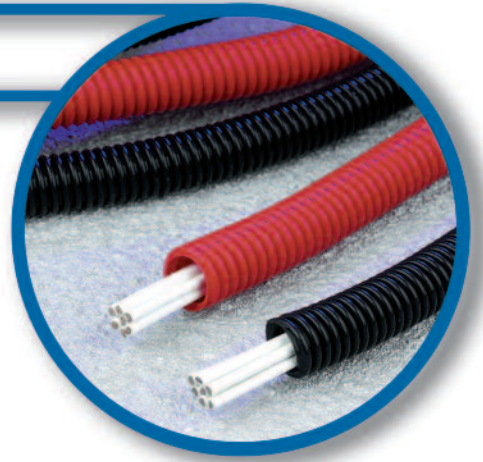


Lightweight PTFE Conduit



CG001 lightweight conduit combines the high temperature and chemical resistance of PTFE with a lightweight design that is ideal for space and weight saving applications. CG001 conduit is particularly suitable for protecting wire and cable in aircraft where weight considerations are paramount. CG001 conduit is Panavia approved and has been used in many major military and civil aircraft programmes.



Technical Characteristics

Continuous operating temperature	-70°C to +260°C
Maximum service temperature	-200°C to +260°C
Melt point	+327°C
Flammability	Non flammable

Part Numbering Information

Part No	Pitch (TPI)	ID Nom (mm)	OD Nom (mm)	Wall (mm)	Minimum Bend Radius (mm)	Weight (kg/m)
CG001/0/LW-06 - Colour	10	4.75	8.05	0.30	11.99	0.016
CG001/0/LW-09 - Colour	9	6.99	10.54	0.36	16.00	0.031
CG001/0/LW-10 - Colour	9	7.92	11.86	0.36	17.02	0.032
CG001/0/LW-12 - Colour	9	9.53	12.70	0.41	19.99	0.042
CG001/0/LW-14 - Colour	9	11.10	14.66	0.41	22.00	0.055
CG001/0/LW-16 - Colour	9	12.70	15.65	0.41	24.99	0.063
CG001/0/LW-20 - Colour	8	15.88	19.05	0.48	29.01	0.069
CG001/0/LW-24 - Colour	7	19.05	23.24	0.56	35.00	0.112
CG001/0/LW-28 - Colour	6	22.23	28.70	0.56	42.01	0.147
CG001/0/LW-32 - Colour	5	25.40	30.28	0.56	46.99	0.182

Availability

Standard colours: Black (0) and Red (2)

Specifications: PAN 75.6628
Eurofighter approved

Note: Metal transitions and terminations to fit circular and rectangular connectors are available on request. Also available with metal over-braiding for mechanical and electromagnetic shielding.

